

الحفاظ على الأفلام، وتقييم جودتها قبل التعريض، وبعده

م. محمد أفغاني

مرخص في المستوى الثاني في التصوير
الشعاعي الصناعي

الحفاظ على الأفلام وتخزينها قبل التعريض

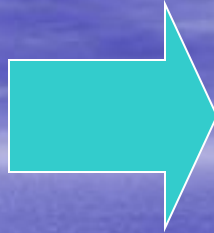
- الانتباه إلى تاريخ الصلاحية.
 - قياس الضبابية.
 - الانتباه إلى مكان التخزين.
 - الانتباه إلى كيفية التخزين.
 - ملاحظات:
١. أثناء تعبئة الأفلام أو قصها.
 ٢. الضوء الخافت وتصميم الحجرة.
 ٣. عدم اصطحاب جميع الأفلام لموقع التعريض.

GENERAL WORK FLOW



Film storage

- Unprocessed film
- Film selection

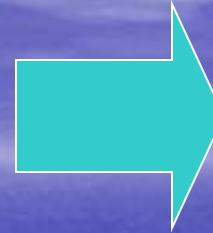


RT Work



Loading and unloading Film

- Darkroom (Dry area)

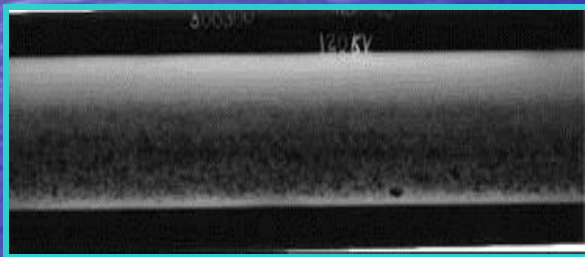


Film Processing

- Darkroom (Wet area)

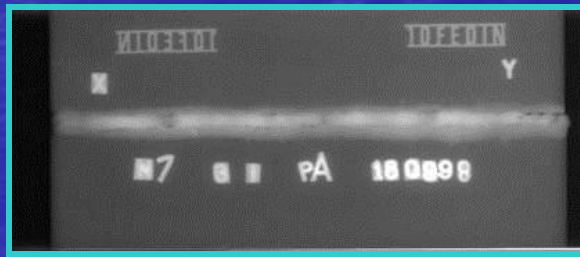


Film dryer



Film storage

- Processed film
- Film filing



التعامل مع الأفلام

- عدم الضغط على الفيلم.
- عدم سحب الفيلم بسرعة.
- عدم قرص الفيلم.
- عدم إمساك الفيلم بالأظفار.
- منع وصول قطرات سائل آخر إلى الفيلم أثناء التحميض.
- الالتزام بخطوات عملية الإظهار وأزمنتها.

بعد انتهاء عملية التصوير

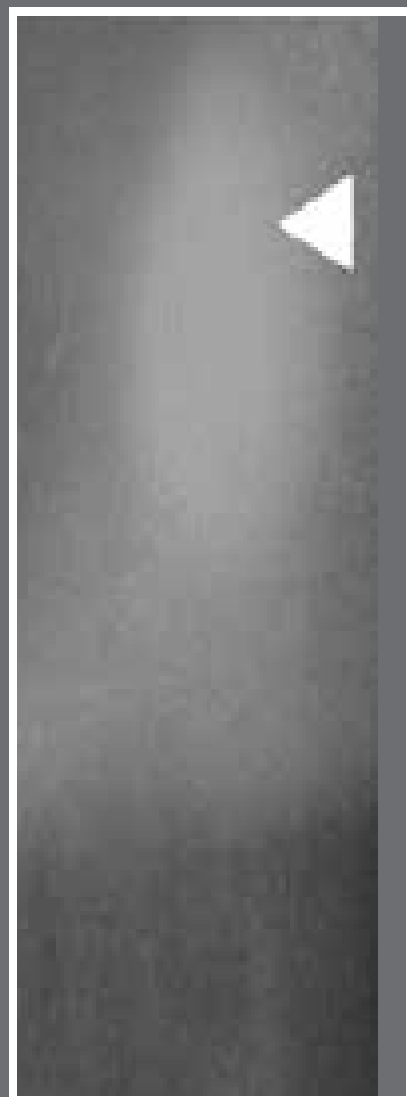
- حفظ الأفلام في ظروف مناسبة من الرطوبة النسبية ودرجة الحرارة.
- منع التصاق الأفلام بوضع أوراق فاصلة بينها.

ضبابية صفراء:

Prolonged development, an oxidised developer, exhausted fixer bath or improper rinsing between developing and fixing may cause **yellow fogging**.

ضبابية رمادية:

Old films, an exhausted or too hot developer, films exposed to radiation or safelighting, cause **grey fog**.



PRESSURE MARKS

WHAT DO THEY LOOK LIKE?

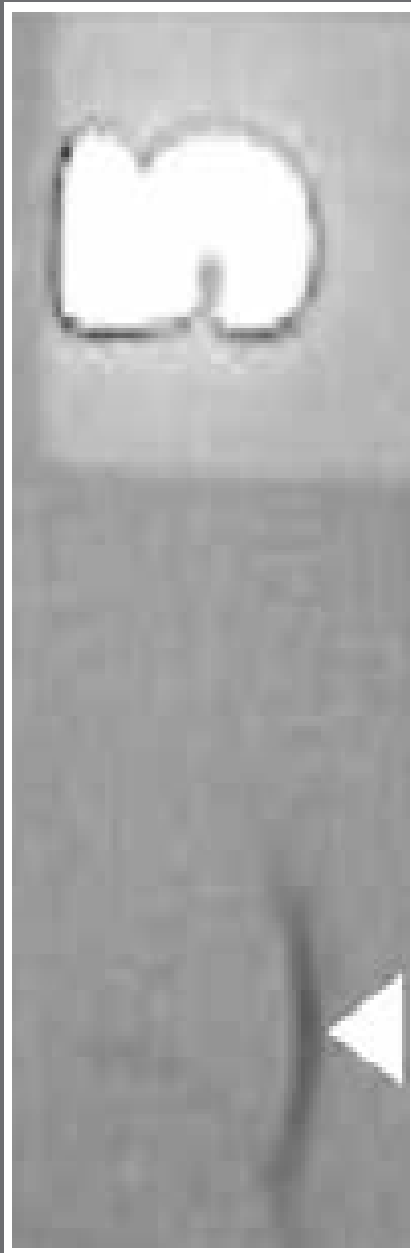
A pressure mark exhibits a significantly lower density compared to adjacent areas.

WHAT CAUSES THEM?

A severe localized application of pressure to an area of the film before exposure.

WHEN CAN THESE OCCUR?

The major cause of pressure marks is poor film handling during the preparation of cassettes. Film may be pinched in the cassette at some point in the handling process. An object dropped on the cassette can also cause pressure marks.



CRIMP MARKS (AFTER EXPOSURE)

WHAT DO THEY LOOK LIKE?

Crimp marks appear as crescent-shaped defects that are darker (higher density) than adjacent film areas.

WHAT CAUSES THEM?

Any sharp bending of the film after exposure and just before or during processing will crimp the film.

WHEN CAN THESE OCCUR?

This usually happens when film is handled improperly when cassettes or hangers are being unloaded.



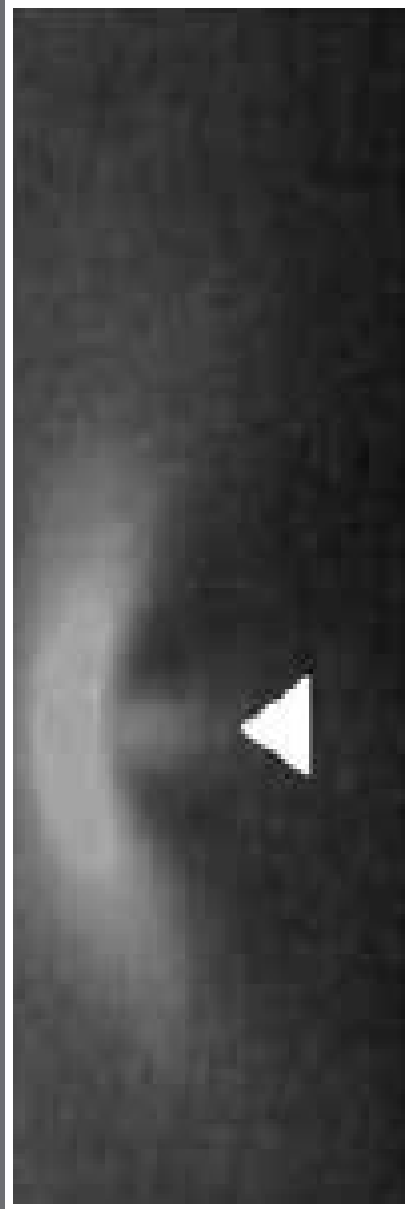
Film Scratch

What's the Artefact?



Static Discharge

What's the Artefact?



CRIMP MARKS (BEFORE EXPOSURE)

WHAT DO THEY LOOK LIKE?

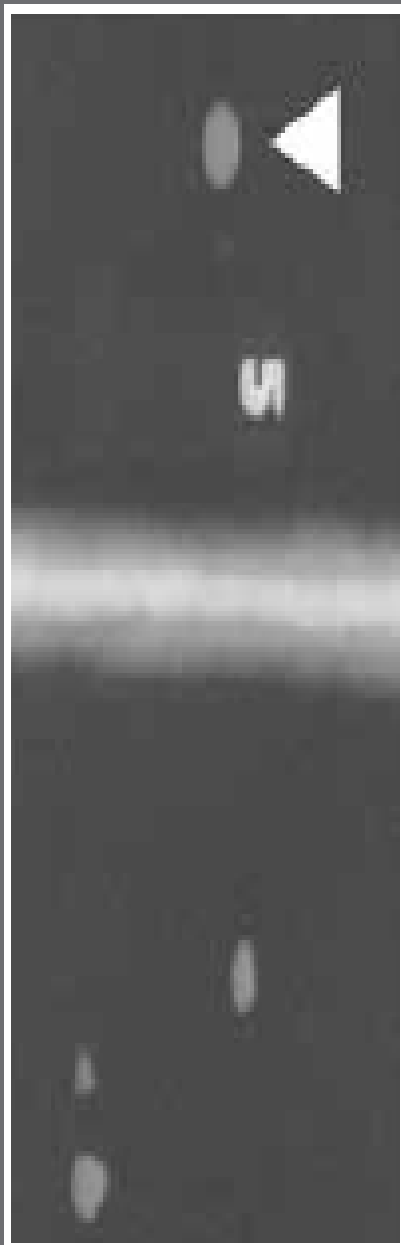
Crimp marks appear as crescent-shaped defects that are lighter (lower density) than adjacent film areas.

WHAT CAUSES THEM?

Sharp, abrupt bending of the film before exposure causes crimp marks of this type.

WHEN CAN THESE OCCUR?

This usually happens when film is handled poorly when removing a sheet from a box or loading a cassette prior to exposure.



SPOTS (FIXER)

WHAT DO THEY LOOK LIKE?

Spots from fixer will appear as small spots of a lower density than the surrounding film area.

WHAT CAUSES THEM?

Before development, a splash of fixer, even in trace amounts, will cause spots.

WHEN CAN THESE OCCUR?

Any time there's chemical contamination you can have a problem. In this case, it's usually due to a poor darkroom layout or careless processing techniques.



SPOTS (DEVELOPER)

WHAT DO THEY LOOK LIKE?

Spots from developer will appear as small spots of a high density compared to the surrounding area of the film.

WHAT CAUSES THEM?

A touch or splash of developer prior to developing the film will cause this type of spot.

WHEN CAN THESE OCCUR?

Poor processing techniques or a bad darkroom layout can lead to spots.

PAPER MARKS

WHAT DO THEY LOOK LIKE?

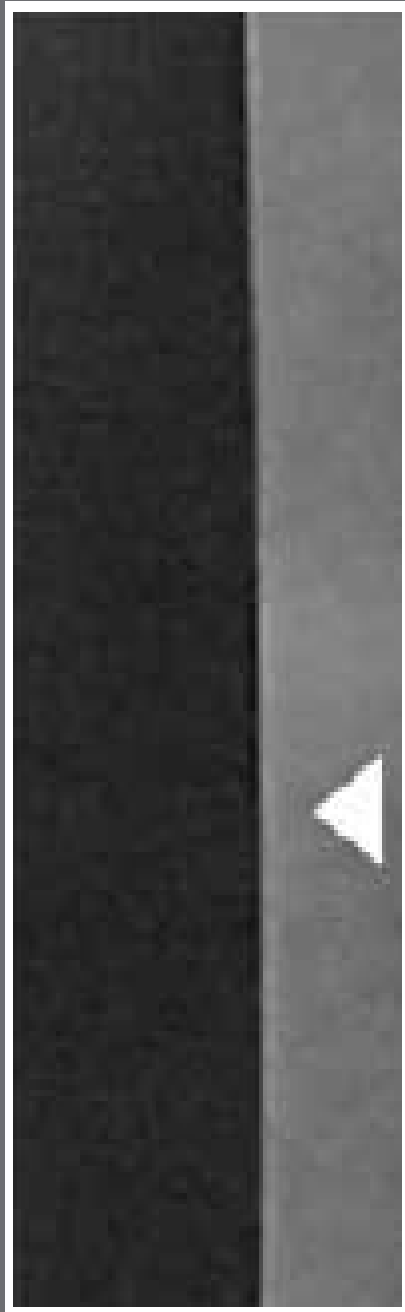
A paper mark will appear as a low density area that almost completely covers the film.

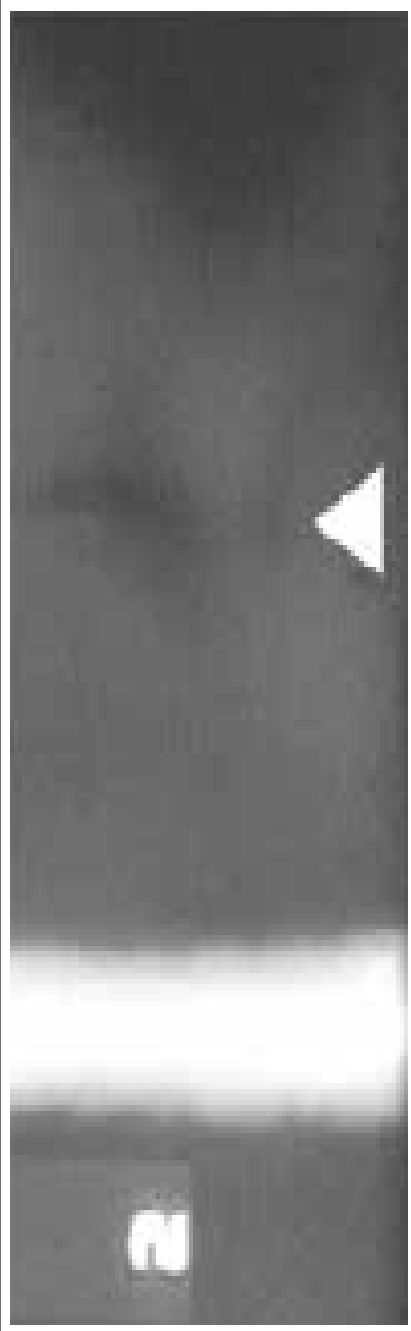
WHAT CAUSES THEM?

Paper marks appear when the paper gets on the film and screen and casts a shadow of itself.

WHEN CAN THESE OCCUR?

This happens when the interleaving paper is not removed.





BLACK STREAKS OR BLOTCHES

WHAT DO THEY LOOK LIKE?

They look just like their name: black streaks or blotches.

WHAT CAUSES THEM?

Extraneous light creates black streaks or blotches.

WHEN CAN THESE OCCUR?

Most often these defects happen when light leaks in because a cassette or film holder is damaged or faulty.

وشكراً لإصغائكم...